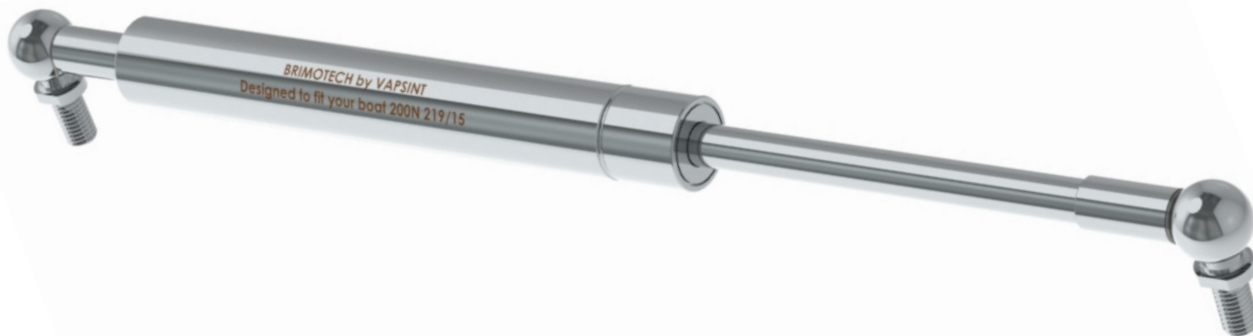


Die Edelstahl Gasfeder

The stainless steel gas spring

De roestvrijstalen gasveer



- ✓ Edelstahl 316L (V4A)
- ✓ Reibungs Möglichkeiten
- ✓ Viton® Dichtungen
- ✓ Extra Fettkammer
- ✓ Elektrolytisch poliert
- ✓ Ablass/Füllventil
- ✓ Laserprint Kodierung

- ✓ Stainless steel 316L
- ✓ Friction options
- ✓ Viton® seals
- ✓ Extra oil chamber
- ✓ Electrolytic polished
- ✓ Deflate/inflate valve
- ✓ Laserprint coding

- ✓ RVS 316L
- ✓ Wrijvings mogelijkheden
- ✓ Viton® afdichtingen
- ✓ Extra olieafdichting
- ✓ Elektrolytisch gepolijst
- ✓ Aflaat/vul ventiel
- ✓ Laserprint codering



Gas springs | Dampers | Engineering

