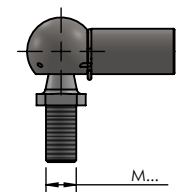
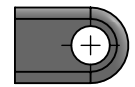


Eyelets		
Select	Ø	PN Brimotech
	Ø6	EF00502
	Ø8	EF00500
	Ø10	EF00501

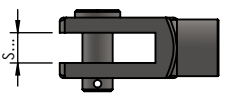
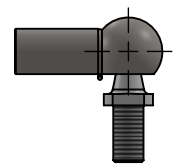
Gaspring types			
Select	Type	Øtube	ØRod
	124	12	4
	156	15	6
	198	19	8
	2210	22	10
	2814	28	14

Eyelets		
Select	Ø	PN Brimotech
	Ø6	EF00502
	Ø8	EF00500
	Ø10	EF00501



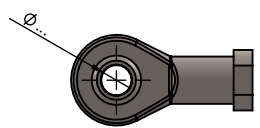
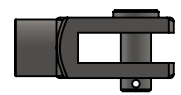
Ball joints Metric		
Select	M	PN Brimotech
	M6	EF00504
	M8	EF00505
	M10	EF00513

Ball joints Metric		
Select	M	PN Brimotech
	M6	EF00504
	M8	EF00505
	M10	EF00513



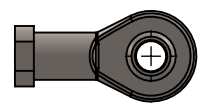
Clevis		
Select	S	PN Brimotech
	S6	EF00518
	S8	EF00517
	S10	EF00519

Clevis		
Select	S	PN Brimotech
	S6	EF00518
	S8	EF00517
	S10	EF00519



Bearing rod end		
Select	Ø	PN Brimotech
	Ø8	EF00515
	Ø10	EF00514

Bearing rod end		
Select	Ø	PN Brimotech
	Ø8	EF00515
	Ø10	EF00514



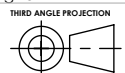
Gas spring code (communication only)					
Type	Stroke	Length	Conn Tube	Conn Rod	Force
-	-	-	-	-	-
Other specs and options on request					

Gas spring code example						
Type	Stroke	Length	Conn Tube	Conn Rod	Force	
198	-	200	-	485	-	400N
			EF00502		EF00502	

Unless otherwise specified: All dimensions are in millimeters & include chem. applied/plated finish. Remove burrs & sharp edges.

CONFIDENTIAL: THIS DOCUMENT AND THE INFORMATION CONTAINED IN IT ARE CONFIDENTIAL AND CANNOT BE COPIED OR DISCLOSED IN WHOLE OR IN PART WITHOUT THE EXPRESS WRITTEN CONSENT OF BRIMOTECH SOLUTIONS HOLLAND

Nominal size (mm)	dim variation (mm)
0 - 3	±0.05
3 - 6	±0.06
6 - 10	±0.07
10 - 15	±0.08
15 - 20	±0.09
20 - 30	±0.10
30 - 50	±0.12
50 - 100	±0.15
100 - 200	±0.20



Brimotech
solutions

Brimotech Solutions
Koperstraat 4 8211 AK Lelystad
T: +31 (0)320 769103 F: +31 (0)84 8317577
The Netherlands

Info@brimotech.nl
www.brimotech.nl

Part number: -

Description: Communication sheet Stainless

Add. info:
Material: Stainless steel 316
Finish: Polished
Configuration: Default
Weight: 690.40 Gram
Drawing: GS specs stainless
Project no: -
Revision:

Date last saved: 13-2-2014
Date created: 20-11-2013
DXF/STEP available on request
DIN: M. Brokkaar
Scale: 1:2

Size
A4