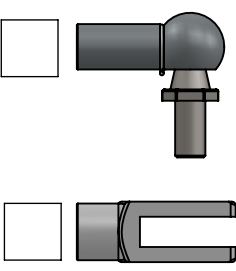
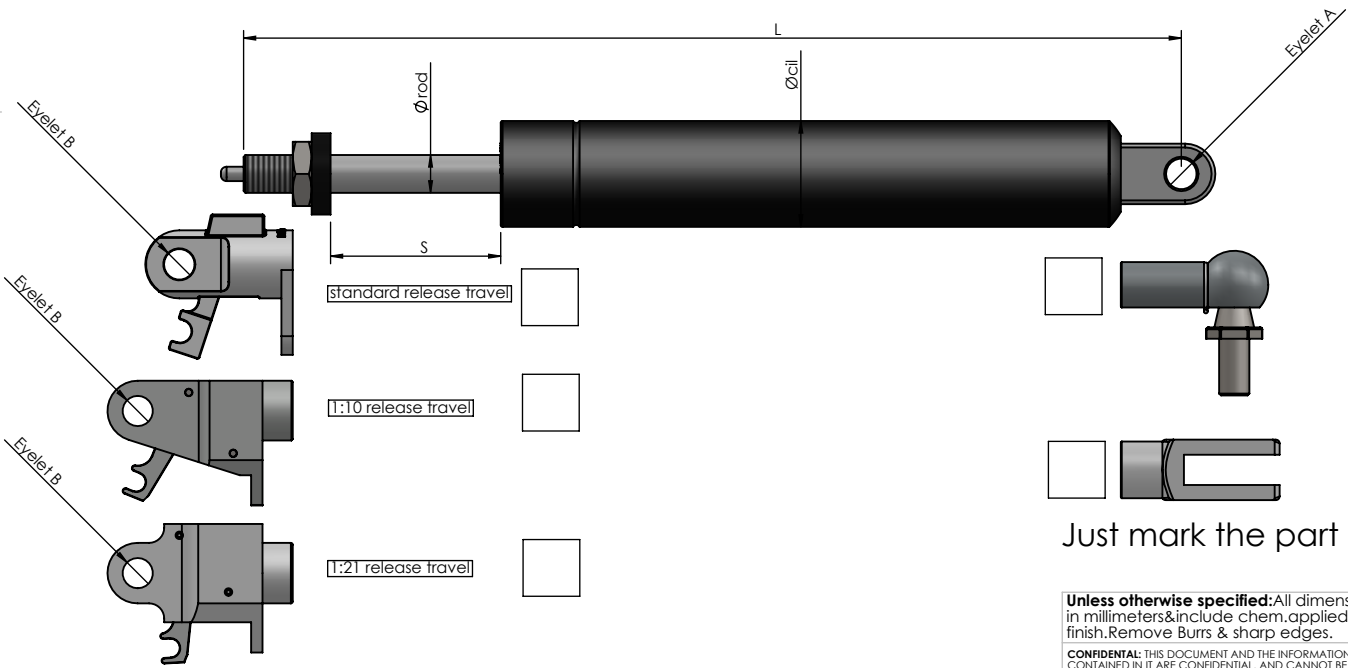


L (length mm)	
S (Stroke mm)	
Øcil (mm)	
Ørod (mm)	
F (Force N)	
Eyelet A (Ø mm)	
Eyelet B (Ø mm)	
Locking	Elastic / rigid in compression / rigid in extension
PartNumber	
Material	Steel / Stainless 316
Color	Black / Grey / other.....
Contact details	



Just mark the part needed and fill out the form on top.

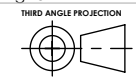
For more options contact us or visit www.brimotech.nl

Unless otherwise specified:All dimensions are in millimeters&include chem.applied/plated finish.Remove Burrs & sharp edges.

CONFIDENTIAL: THIS DOCUMENT AND THE INFORMATION CONTAINED IN IT ARE CONFIDENTIAL AND CANNOT BE COPIED OR DISCLOSED IN WHOLE OR IN PART WITHOUT THE EXPRESS WRITTEN CONSENT OF BRIMOTECH SOLUTIONS HOLLAND

Tolerance according to NEN-ISO 406
 Roughness according to NEN 3634
 Shape tolerance according to NEN-ISO 1101

Nominal size (mm)	dim variation (mm)
0-18	±0.05
18-30	±0.07
30-50	±0.10
50-80	±0.15
80-100	±0.20
100-150	±0.30
150-200	±0.40



Brimotech solutions
 Brimotech Solutions
 Koperstraat 4 8211 AK Lelystad
 T: +31 (0)320 769103 F: +31 (0)84 8317577
 The Netherlands
 Info@brimotech.nl
 www.brimotech.nl

Part number:	-
Description:	Communication sheet
Add. info:	-
Material:	Steel
Finish:	RAL9005
Configuration:	Default
Weight:	624.78 Gram
Drawing:	GS Specs lock
Project no:	-
Revision:	-
Date last saved:	10-9-2013
Date created:	22-3-2013
DXF available on request	
Scale:	1:2

Size **A4**
 Drawn by: M. Brokkaar