

1 2 3 4 5 6

A

A

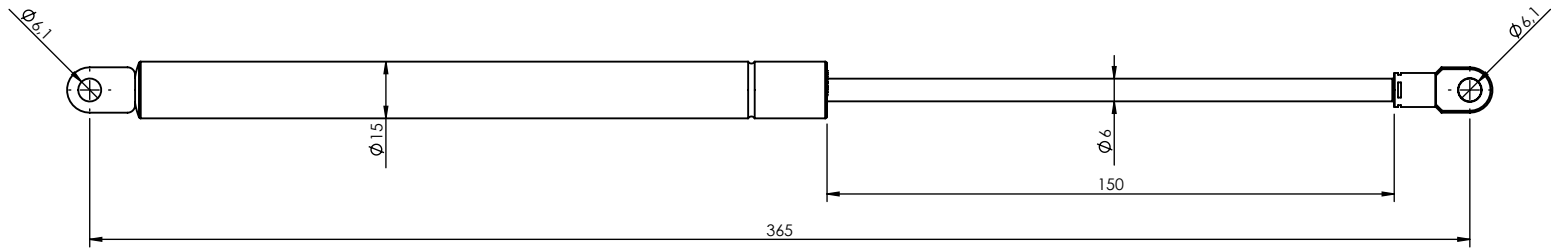
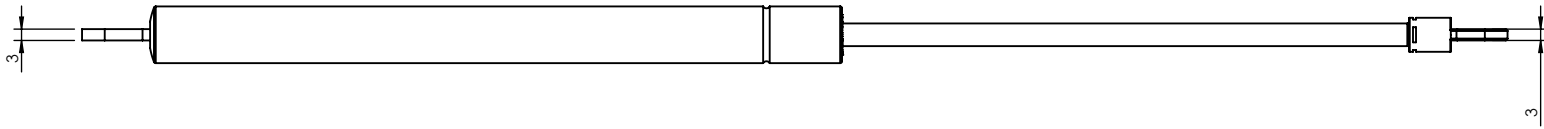
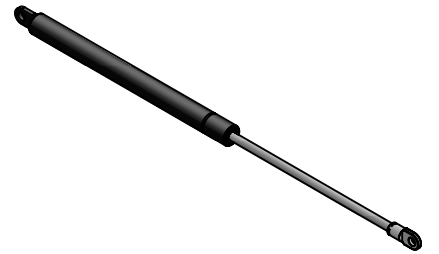
B

B

C

C

D

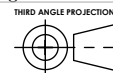


Unless otherwise specified: All dimensions are in millimeters & include chem. applied/plated finish. Remove Burrs & sharp edges.

CONFIDENTIAL: THIS DOCUMENT AND THE INFORMATION CONTAINED IN IT ARE CONFIDENTIAL, AND CANNOT BE COPIED OR DISCLOSED IN WHOLE OR IN PART WITHOUT THE EXPRESS WRITTEN CONSENT OF BRIMOTECH SOLUTIONS BY HOLLAND

Tolerance according to NEN-ISO 406
 Roughness according to NEN 3634
 Shape tolerance according to NEN-ISO 1101

Nominal size (mm)	dim variation (mm)
0 - 3	±0.05
3 - 6	±0.06
6 - 10	±0.08
10 - 15	±0.10
15 - 20	±0.12
20 - 30	±0.15
30 - 50	±0.20
50 - 100	±0.30
100 - 200	±0.50
200 - 500	±0.80
500 - 1000	±1.20
1000 - 2000	±2.00



General tolerance on gas springs and dampers ±0.2mm

Brimotech solutions
 Brimotech Solutions BV
 Koperstraat 4 8211 AK Lelystad
 T: +31 (0)320 769103 F: +31 (0)84 8317577
 The Netherlands

Info@brimotech.nl
 www.brimotech.nl

Part number: **10220007**
 Description: Gas spring stroke 150mm

Add. info:
 Material: Steel
 Finish: RAL9005
 Configuration: **Open force [50N-400N]**
 Weight: 136.73 Gram
 Drawing: 10220007 **F1 Force:N**
 Project no:
 Revision:

Date last saved: 21-10-2015
 Date created: 1-5-2012
 DXF/STEP available on request
 Scale: 1:2

Size **A4**
 Drawn by: M. Brokkaar

1 2 3 4 5 6